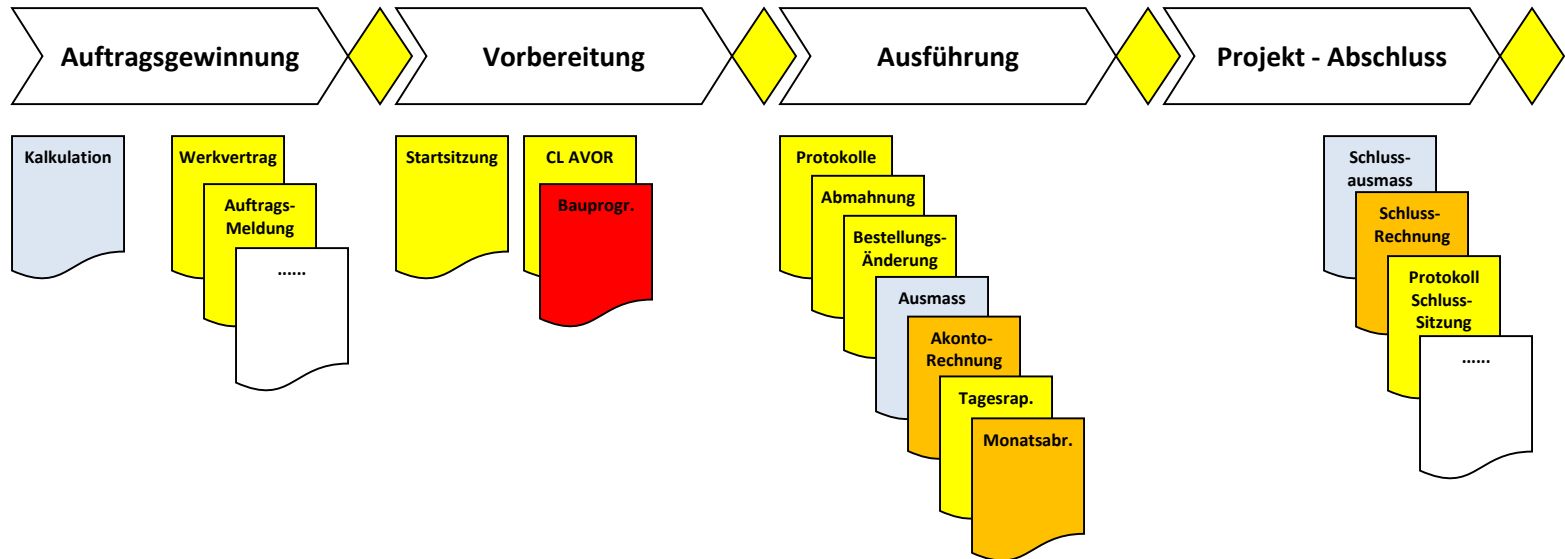




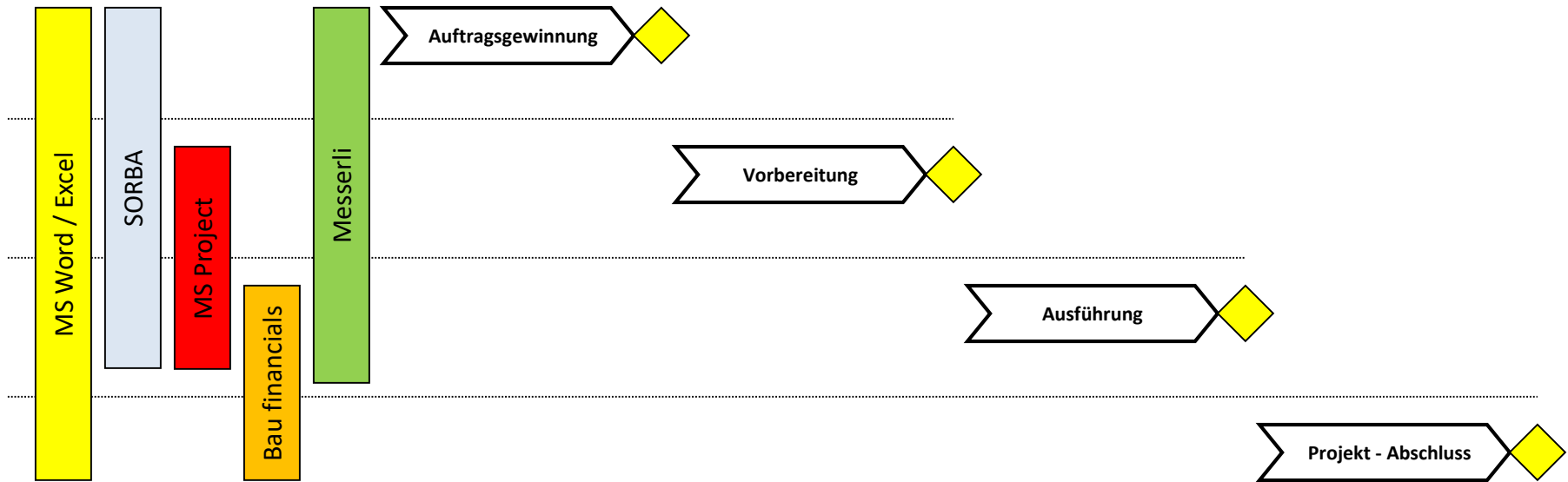
MEGABAU

Bereich Projekte

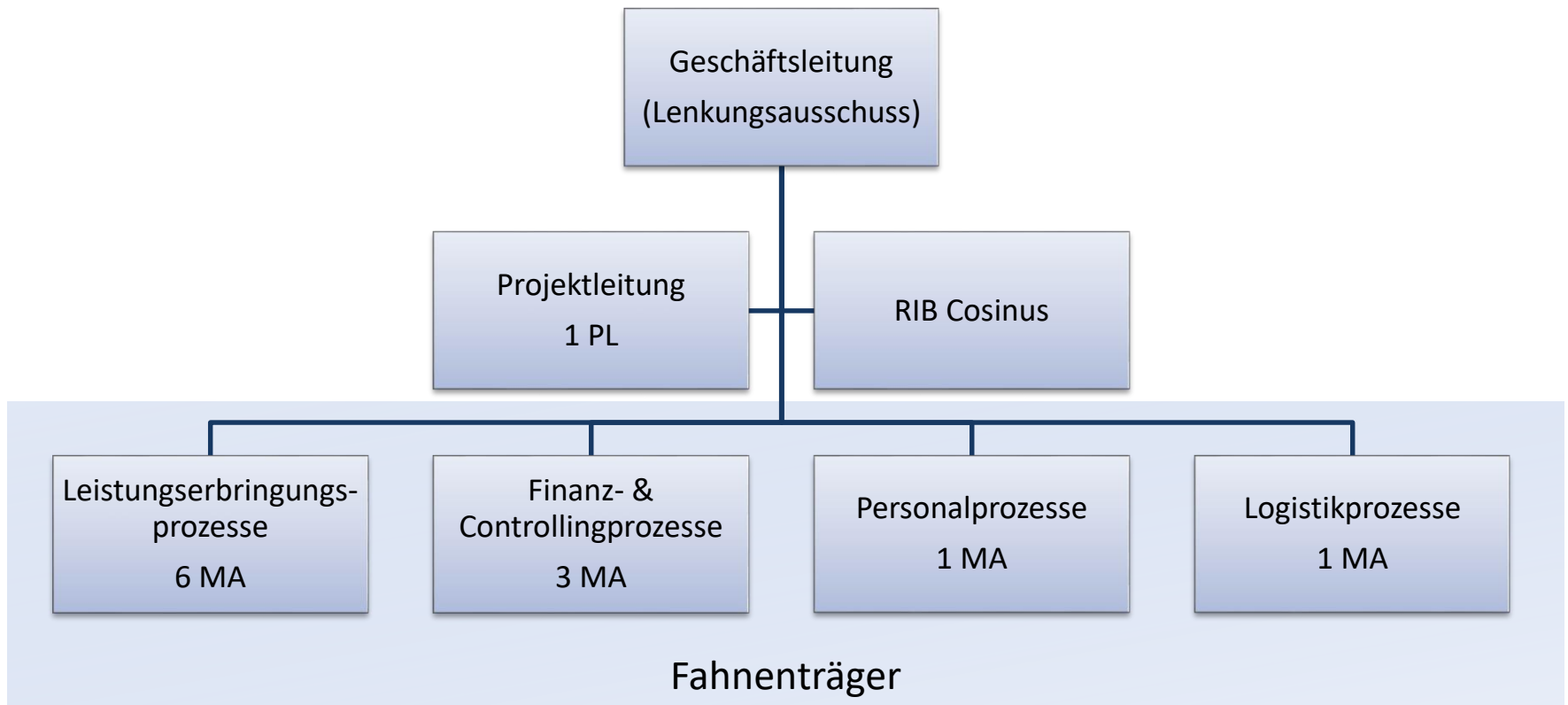
24. Oktober 2017



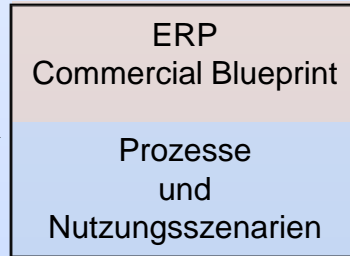
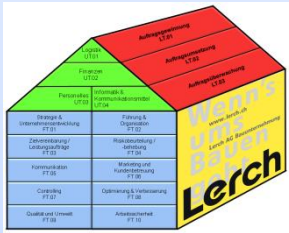
- Viele Vorlagen werden nicht genutzt oder unvollständig ausgefüllt → Effizienz
- Individuelle Arbeitsweise bei der Bauausführung → Effektivität



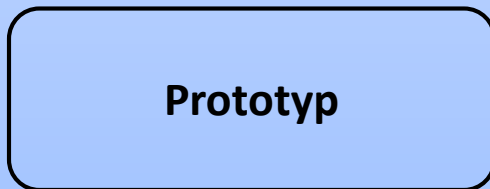
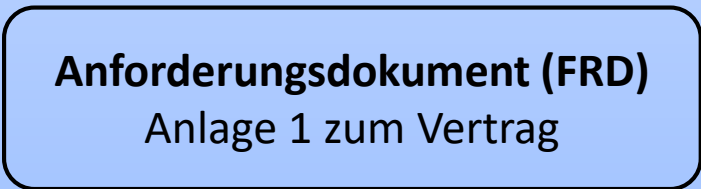
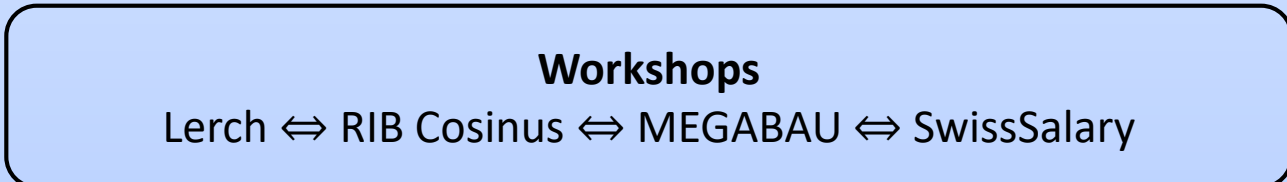
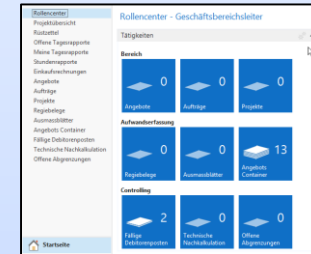
- Daten und Informationen werden mehrfach abgelegt → Redundanz
- Daten werden von Hand zwischen den Tools transportiert → fehlende Integrität
- Controlling aufwendig → fehlende Aktualität



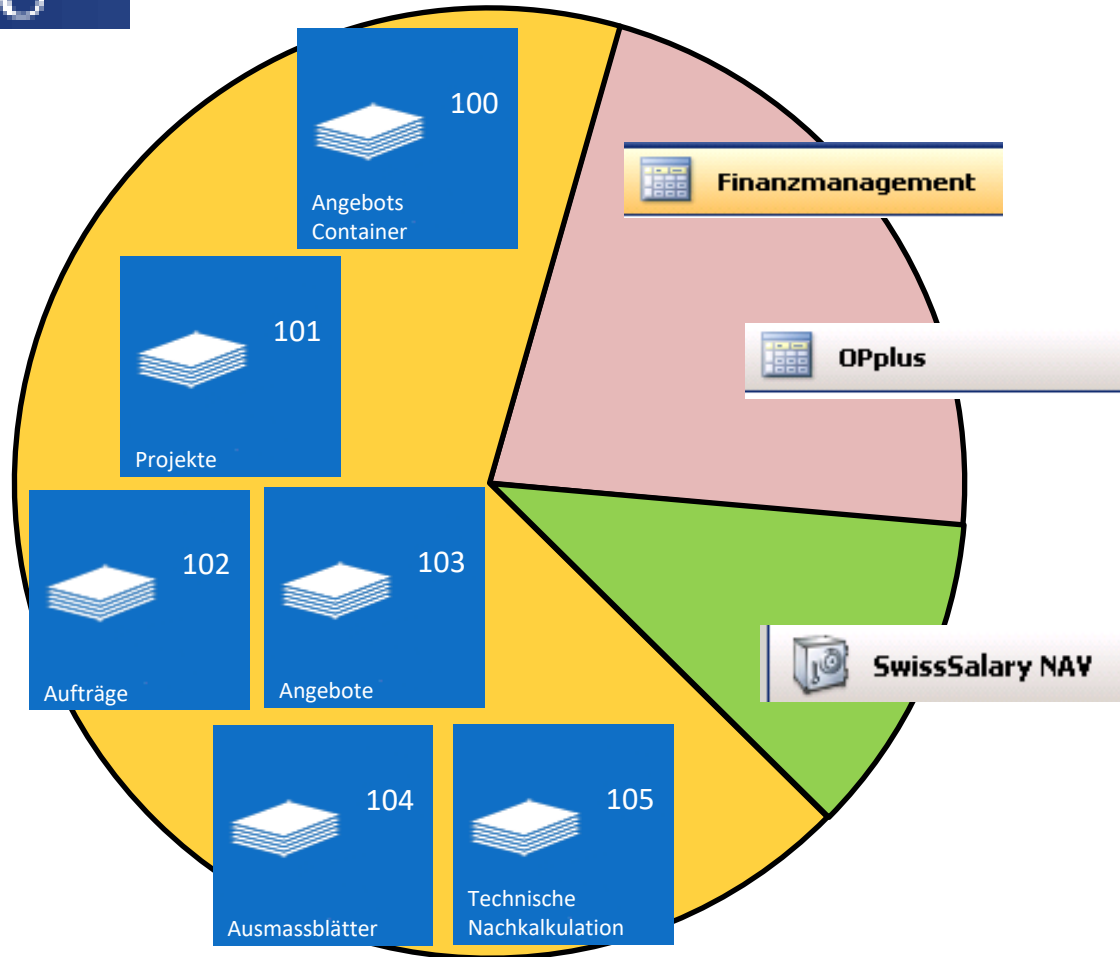
Führungssystem (Lerch Haus)



ERP-MEGABAU Standard



MEGABAU®



Polier

The screenshot shows the 'Rollencenter - Polier' interface in Microsoft Dynamics NAV. The top navigation bar includes 'START', 'AKTIONEN', and 'BERICHT' tabs, along with a search bar and a 'Konfigurationsmodus | Lerch A...' button. Below the navigation bar are three 'Neuer' buttons for 'Stundenrapport', 'Tagesrapport', and 'Rüstzettel'. The main area is divided into a left sidebar and a central content area. The sidebar lists various reports and documents. The central area displays 'Rollencenter - Polier' with sections for 'Tätigkeiten', 'Meine Projekte', 'Bereich' (showing 'Projekte' with a value of 0), and 'Aufwandsfassung' (showing 'Regiebelege' with a value of 0). The bottom status bar shows '01 - Lerch AG', 'Mittwoch, 11. Oktober 2017', and 'LERCH|R.MAYER'.

Bauführer

The screenshot shows the 'Rollencenter - Bauführer' interface in Microsoft Dynamics NAV. The top navigation bar is identical to the 'Polier' role center. The main area displays 'Rollencenter - Bauführer' with sections for 'Tätigkeiten', 'Meine Projekte', 'Bereich' (showing 'Angebote', 'Aufträge', and 'Projekte' with values of 0), 'Aufwandsfassung' (showing 'Regiebelege' with 0, 'Ausmassblätter' with 0, and 'Angebots Container' with 13), and 'Controlling' (showing 'Fällige Debitorenposten' with 2, 'Technische Nachkalkulation' with 0, and 'Offene Abgrenzungen' with 0). The bottom status bar shows '01 - Lerch AG', 'Mittwoch, 11. Oktober 2017', and 'LERCH|R.MAYER'.



MEGABAU

Live-Präsentation

24. Oktober 2017